



MONTHLY MEMBERSHIP PROGRESS REPORT

District 7 N

Results as of: 9/30/2016

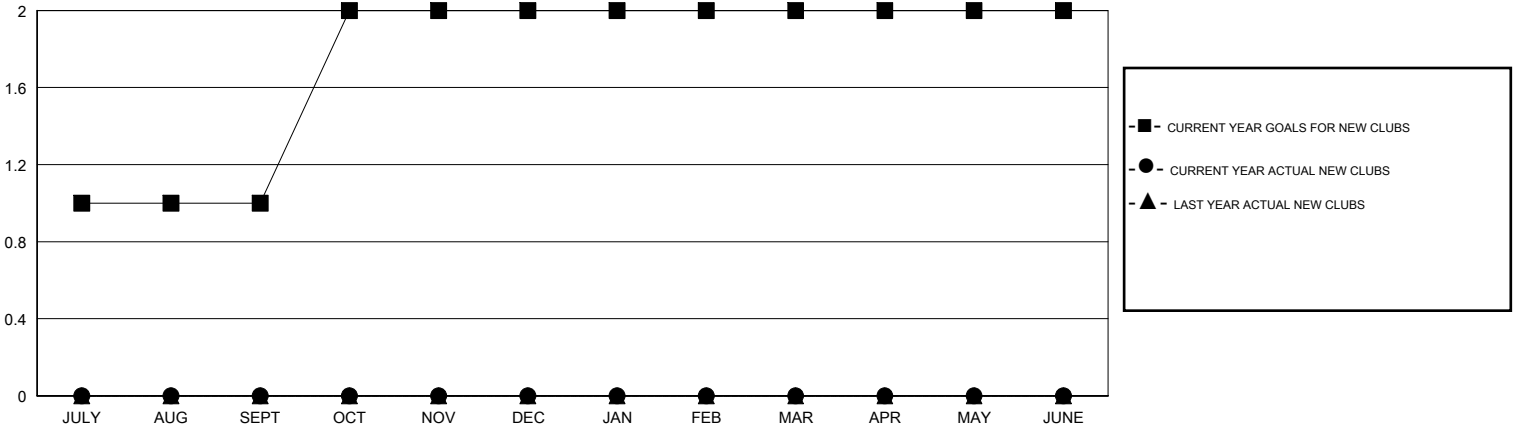
GMT: HAL GRIFFIN

LOCATION ARKANSAS

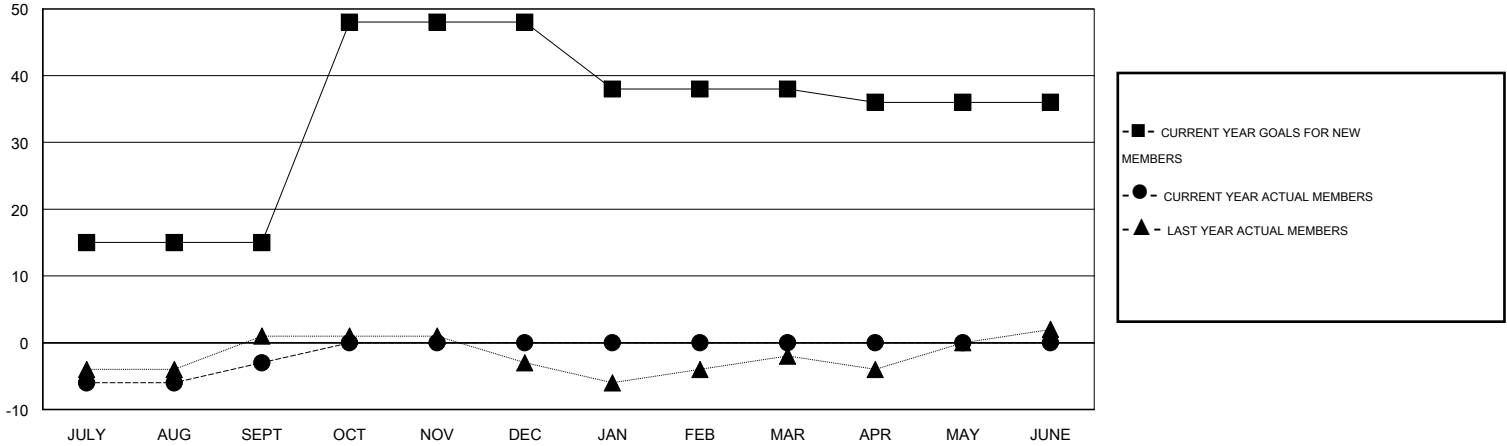
GMT CA 1

Clubs					Members				
RESULTS FOR 2016-2017					RESULTS FOR 2016-2017				
QUARTER	NEW CLUB GOAL	NEW CLUBS	DROPPED CLUBS	NET GAIN/LOSS	QUARTER	NEW MEMBER GOAL	CHARTER AND NEW MEMBERS ADDED	DROPPED MEMBERS	NET GAIN/LOSS
JULY/AUG/SEPT	1	0	0	0	JULY/AUG/SEPT	15	13	16	-3
OCT/NOV/DEC	1	0	0	0	OCT/NOV/DEC	33	0	0	0
JAN/FEB/MAR	0	0	0	0	JAN/FEB/MAR	-10	0	0	0
APR/MAY/JUNE	0	0	0	0	APR/MAY/JUNE	-2	0	0	0

GOALS AND ACTUAL NEW CLUBS CUMULATIVE



GOALS AND ACTUAL MEMBERS CUMULATIVE



DROPPED CLUBS: 0	10 CLUBS OF 34 ADDED 1 OR MORE NEW MEMBERS	GENDER DISTRIBUTION
		MALE 462 (61.85%)
		FEMALE 285 (38.15%)
DROPPED MEMBERS	CLICK HERE FOR HEALTH ASSESSMENT DATA	FAMILY UNIT MEMBERS 153
DECEASED 3		HEAD OF HOUSEHOLD 76
CLUB CANCELLED 0		NON-HEAD OF HOUSEHOLD 77
OTHER 13		
TOTAL 16		